



PLUTUS  
QUARTZ & TILES

E A R  
T H -  
E V O  
L U T  
I O N

600x1200MM

COLLECTION 2020

[www.plutusmarbles.com](http://www.plutusmarbles.com)



PLUTUS  
QUARTZ & TILES

## THE GLOBAL DESIGN PARTNER

Plutus has earned the tag of being a global design partner due to its hard work and dedication in the field of premium porcelain and wall tiles, tailor made for every surface you could possibly think.

With huge investments in design specialization and the world's most advanced technologies, Plutus stands tall as the premium solution provider for any type of application in residential, commercial and public architecture.

### ABOUT US

Plutus aims at bringing together the best of expertise and innovation along with an unmatched experience of more than three decades. Plutus aims to revolutionize the industry by introducing slabs that are sure to raise the bar of grandeur a notch higher.

DISTINCTIVELY  
INSPIRING,  
IMPRESSIVELY  
DIFFERENT.

and you  
thought stones  
are lifeless

[www.plutusmarbles.com](http://www.plutusmarbles.com)



Our Plutus Marble And Quartz Collection Is As Expressive As You. Hear Their Inner Voice That Resonates in Harmony Feeling Emerge And Fully Bloom. Explore The Collection

The stunning appearance  
of glossiness, replicating  
its extraordinarily diverse.

600x1200MM

**EARTH**



GLOSSY



600x1200MM  
**EARTH**



**PLUTUS**  
QUARTZ & TILES

ALPEN BEIGE



Finish : Polished  
Thickness : 9MM



CLASSIC BEIGE



Finish : Polished  
Thickness : 9MM



- Ecology & Sustainable
- Resistant to staining
- Impact Resistant
- Acid Resistant
- Thermal Shock Resistant
- Easy to clean
- Frost Resistant
- Break Resistant

- Garden & Pools
- Residences
- Hotels
- Offices
- Restaurants
- Shops
- Mills
- Public Spaces
- Airports
- Railway Stations
- Bathrooms
- Interiors
- Kitchens

ARTSY BEIGE



Finish : Polished  
Thickness : 9MM



BRECCIA PEARL



Finish : Polished  
Thickness : 9MM



BOTTOCHINO REAL



Finish : Polished  
Thickness : 9MM



CREMA MARFIL



Finish : Polished  
Thickness : 9MM



MANILA IVORY



Finish : Polished  
Thickness : 9MM



MANILA BROWN



Finish : Polished  
Thickness : 9MM



- Ecology & Sustainable
- Resistant to staining
- Impact Resistant
- Acid Resistant
- Thermal Shock Resistant
- Easy to clean
- Frost Resistant
- Break Resistant

- Garden & Pools
- Residence
- Hotel
- Office
- Restaurants
- Shops
- Mills
- Public Spaces
- Airports
- Railway Stations
- Bathrooms
- Interiors
- Kitchens

EPSILON BEIGE



Finish : Polished  
Thickness : 9MM



MARMI BEIGE



Finish : Polished  
Thickness : 9MM



EPSILON SILVER



Finish : Polished  
Thickness : 9MM



MARMI GREY



Finish : Polished  
Thickness : 9MM



SOUL BEIGE



Finish : Polished  
Thickness : 9MM



REGAL IVORY (BOOKMATCH)



Finish : Polished  
Thickness : 9MM





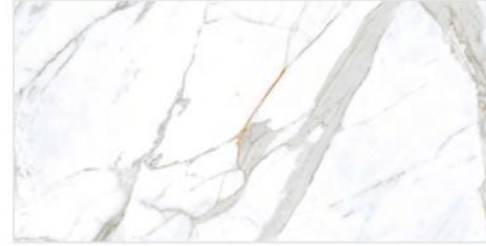
SPIDER GREY



Finish : Polished  
Thickness : 9MM



NEPTUNE SATVARIO



Finish : Polished  
Thickness : 9MM



PRISM BEIGE



Finish : Polished  
Thickness : 9MM

PISA SILVER



Finish : Polished  
Thickness : 9MM



Ecology & Sustainable



Resistant to staining



Impact Resistant



Acid Resistant



Thermal Shock Resistant



Easy to clean



Frost Resistant



Break Resistant



Garden & Pools



Residence



Hotels



Offices



Restaurants



Shops



Mills



Public Spaces



Airports



Railway Stations



Bathrooms



Interiors

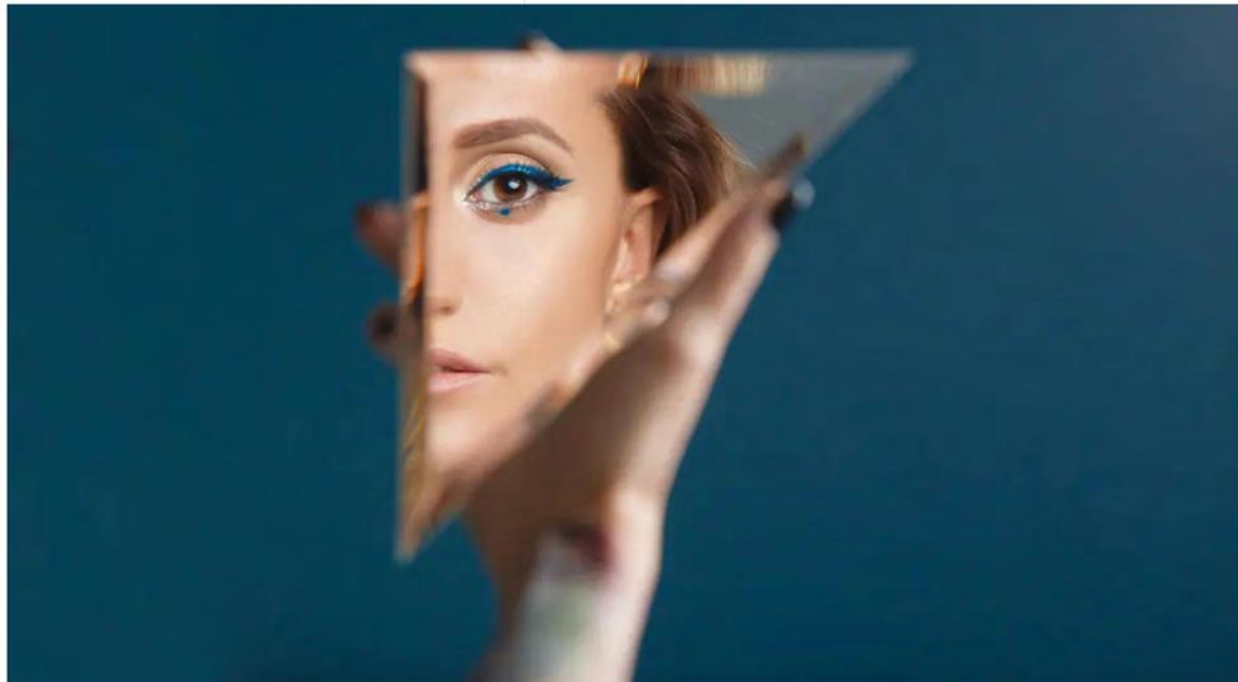


Kitchens

A precious touch of mirror  
finish to give your home  
a polished and refined,  
gritty-but-dreamy look.

600x1200MM

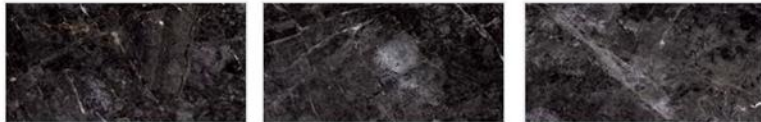
**EARTH**



AFRICAN NERO



Finish : High Gloss  
Thickness : 9MM



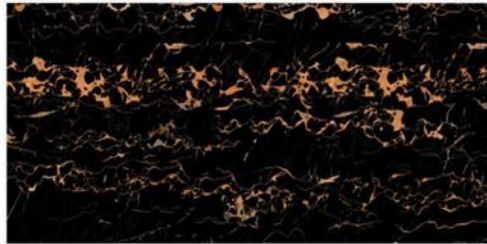
MARMO BROWN



Finish : High Gloss  
Thickness : 9MM



GOLDEN PORTORO



Finish : High Gloss  
Thickness : 9MM



MURCIA BLUE



Finish : High Gloss  
Thickness : 9MM



-  Ecology & Sustainable
-  Resistant to staining
-  Impact Resistant
-  Acid Resistant
-  Thermal Shock Resistant
-  Easy to clean
-  Frost Resistant
-  Break Resistant

-  Garden & Pools
-  Residences
-  Hotels
-  Offices
-  Restaurants
-  Shops
-  Mills
-  Public Spaces
-  Airports
-  Railway Stations
-  Bathrooms
-  Interiors
-  Kitchens

PORTORO ARGENTO



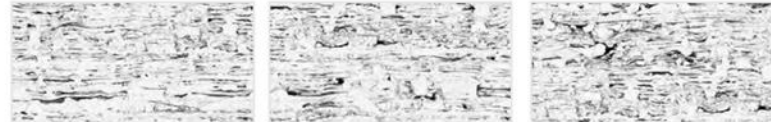
Finish : High Gloss  
Thickness : 9MM



WHITE PORTORO



Finish : High Gloss  
Thickness : 9MM



- Ecology & Sustainable
- Resistant to staining
- Impact Resistant
- Acid Resistant
- Thermal Shock Resistant
- Easy to clean
- Frost Resistant
- Break Resistant

- Garden & Pool
- Residence
- Hotel
- Office
- Restaurants
- Shops
- Malls
- Public Spaces
- Airports
- Railway Stations
- Bathrooms
- Kitchens
- Others

The creative identity of the material through a contemporary perspective.

600x1200MM

**EARTH**



600x1200MM  
**EARTH**



**PLUTUS**  
QUARTZ & TILES

TECHNO BEIGE



Finish : Rustic Matt  
Thickness : 9MM

TECHNO GREY



Finish : Rustic Matt  
Thickness : 9MM



- Ecology & Sustainable
- Resistant to staining
- Impact Resistant
- Acid Resistant
- Thermal Shock Resistant
- Easy to clean
- Frost Resistant
- Break Resistant

- Garden & Pools
- Residences
- Hotels
- Offices
- Restaurants
- Shops
- Mills
- Public Spaces
- Airports
- Railway Stations
- Bathrooms
- Interiors
- Kitchens

600x1200MM  
**EARTH**



TECHNO MOCA



Finish : Rustic Matt  
Thickness : 9MM

TECHNO BRONZE



Finish : Rustic Matt  
Thickness : 9MM



EDEN BLACK



Finish : Rustic Matt  
Thickness : 9MM



Ecology & Sustainable

Resistant to staining

Impact Resistant

Acid Resistant

Thermal Shock Resistant

Easy to clean

Frost Resistant

Break Resistant

Garden & Pools

Residence

Hotel

Office

Restaurants

Shops

Mills

Public Spaces

Airports

Railway Stations

Bathrooms

Interiors

Kitchens

Kitchens

EDEN CREMA



Finish : Rustic Matt  
Thickness : 9MM



EDEN LIGHT GREY



Finish : Rustic Matt  
Thickness : 9MM



EDEN BROWN



Finish : Rustic Matt  
Thickness : 9MM



EDEN GREY



Finish : Rustic Matt  
Thickness : 9MM

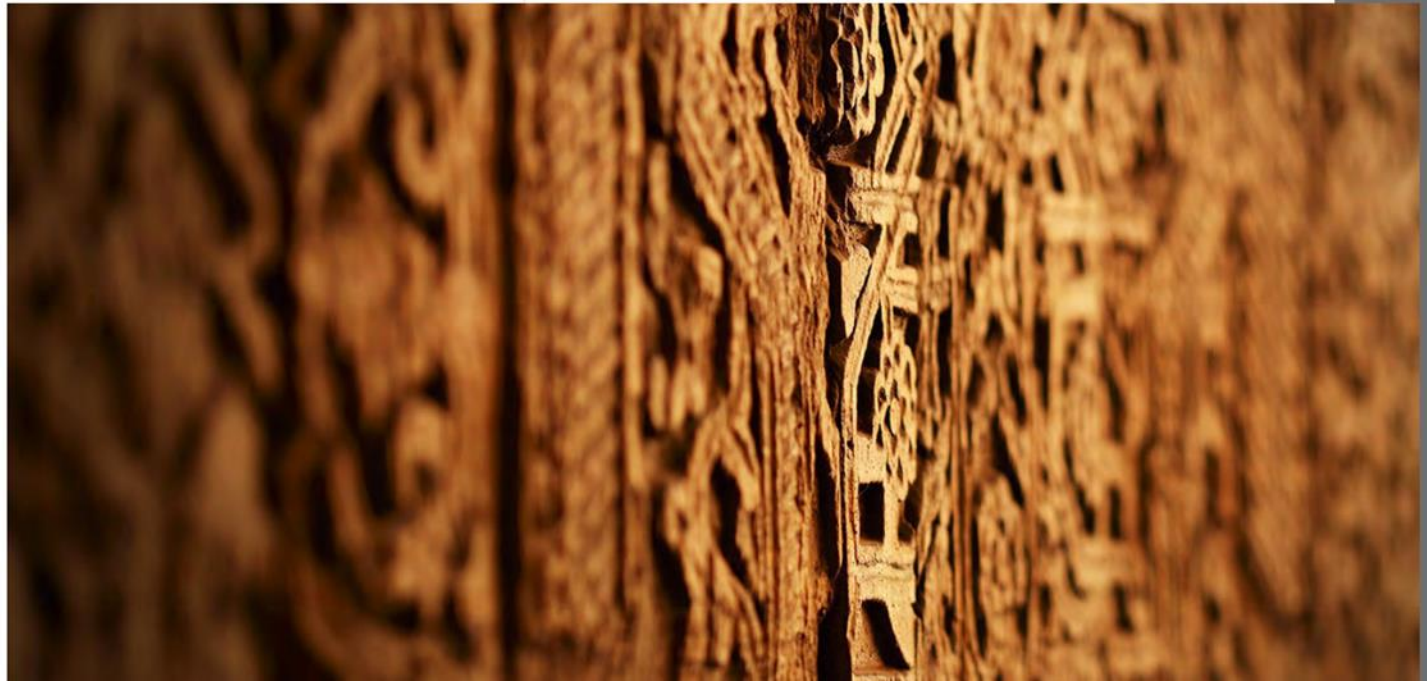




A delicately carved surface  
that recaptures and  
exhibits veins and textures.

600x1200MM

**EARTH**



CARVING

600x1200MM

EVOLUTION



ARIZONA



Finish : Carving  
Thickness : 9MM



DULINE BIANCO



Finish : Carving  
Thickness : 9MM



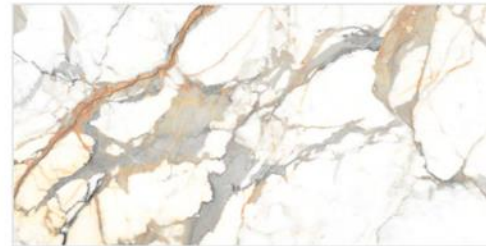
BOTTOCHINO



Finish : Carving  
Thickness : 9MM



SPARKLE LATINA



Finish : Carving  
Thickness : 9MM



Ecology & Sustainable



Resistant to staining



Impact Resistant



Acid Resistant



Thermal Shock Resistant



Easy to clean



Frost Resistant



Break Resistant



Garden & Pool



Residence



Hotel



Office



Restaurants



Shop



Mill



Public Space



Airport



Railway Station



Bathroom



Interior



Kitchen

600x1200MM

# EVOLUTION



ASTER BEIGE



Finish : Carving  
Thickness : 9MM

VATICAN WHITE

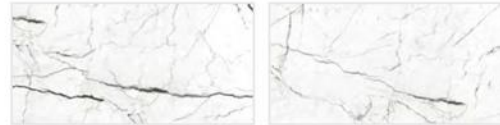


Finish : Carving  
Thickness : 9MM

ASTER GREY



Finish : Carving  
Thickness : 9MM



DECO BEIGE



Finish : Carving  
Thickness : 9MM



CHARACTERISTIC	STANDARD AS PER ISO-13004/EN 14411 GROUP B1a	MEAN VALUE OF POLISHED GVT	MEAN VALUE OF RUSTIC GVT	TEST METHOD
<b>REGULATORY PROPERTIES</b>				
Deviation in length & width	±0.5 %	±0.1 %	±0.1 %	ISO-10545-2
Deviation in thickness	±5.0 %	±4.0 %	±4.0 %	ISO-10545-2
Straightness in side	±0.5 %	±0.1 %	±0.1 %	ISO-10545-2
Rectangularity	±0.5 %	±0.1 %	±0.1 %	ISO-10545-2
Surface flatness	±0.5 %	±0.2 %	±0.2 %	ISO-10545-2
Color difference	Unaltered	No change	No change	ISO-10545-16
Glossiness	As per mfg	Min 90%	Min 4%	GLOSSOMETER
<b>STRUCTURAL PROPERTIES</b>				
Water absorption	< 0.50 %	< 0.20 %	< 0.20 %	ISO-10545-3
Apparent density	> 2.0 g/cc	>2.10 g/cc	>2.10 g/cc	DIN 51082
<b>MASSIVE MECHANICAL PROPERTIES</b>				
Modulus of rupture	Min. 35 N/mm <sup>2</sup>	Min. 40 N/mm <sup>2</sup>	Min. 40 N/mm <sup>2</sup>	ISO-10545-4
Breaking strength	Min. 1300 N	Min. 2000 N	Min. 2000 N	ISO-10545-4
Impact resistance	As per mfg.	Min. 0.55	Min. 0.55	ISO-10545-5
<b>SURFACE MECHANICAL PROPERTIES</b>				
Surface abrasion resistance	As per mfg.	Min, Class-3	Min, Class-4	ISO-10545-7
MOH's hardness	As per mfg.	Min. 4	Min. 5	EN 101
<b>THERMO HYGROMETRIC PROPERTIES</b>				
Frost resistance	No damage	No damage	No damage	ISO-10545-12
Thermal shock resistance	No damage	No damage	No damage	ISO-10545-9
Moisture expansion	Nil	Nil	Nil	ISO-10545-10
Thermal expansion (COE)	Max. 9.0 x 10 <sup>-6</sup>	Max. 6.5x10 <sup>-6</sup>	Max. 6.5 x 10 <sup>-6</sup>	ISO-10545-8
Crazing resistance	As per mfg.	Min. 10 Cycle	Min. 10 Cycle	ISO-10545-11
<b>CHEMICAL PROPERTIES</b>				
Chemical resistance	No damage	No damage	No damage	ISO-10545-13
Stain resistance	Resistant	Resistant	Resistant	ISO-10545-14
<b>SAFETY PROPERTIES</b>				
Slip resistance	As per mfg.	>0.40	>0.40	ISO-10545-17
Fire resistance	As per mfg.	Fire proof	Fire proof	N. A.
Lead & Cadmium given off by glazed tiles	As per mfg.	Does not yield Pb & Cd	Does not yield Pb & Cd	ISO-10545-15

## EARTH

### PACKING DETAILS

SR. NO.	PRODUCT	NOMINAL SIZE	TILES PER BOX	COVERAGE AREA
1	VITRIFIED TILES	600x1200 mm	2	1.44 Sq. Mtr.

## EVOLUTION

### PACKING DETAILS

SR. NO.	PRODUCT	NOMINAL SIZE	TILES PER BOX	COVERAGE AREA
1	VITRIFIED TILES	600x1200 mm	2	1.44 Sq. Mtr.

NOTE: Colour shown are as accurate as the limitations of the printing process will allow. Prospective Customer are advised to inspect a sample of tiles before ordering, every effort has been made to ensure the accuracy of the information given. However, the Company reserves the right to change the specifications without prior notice. Sometimes variations in shade or size being inherent to ceramic industry may occur. Before fixing, we advise you to follow the fixing instructions on the surface of the tiles as no responsibility can be accepted by the once the tiles have been fixed.